

# MONTHLY MEMBERSHIP PROGRESS REPORT

LOCATION ENGLAND

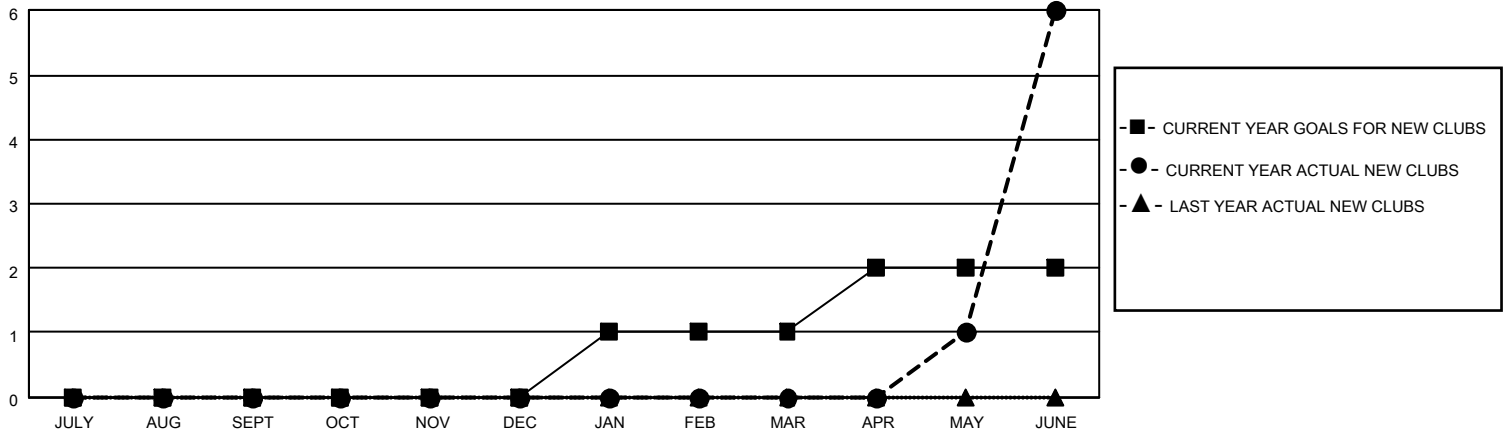
District 105CW

Results as of: 6/30/2023

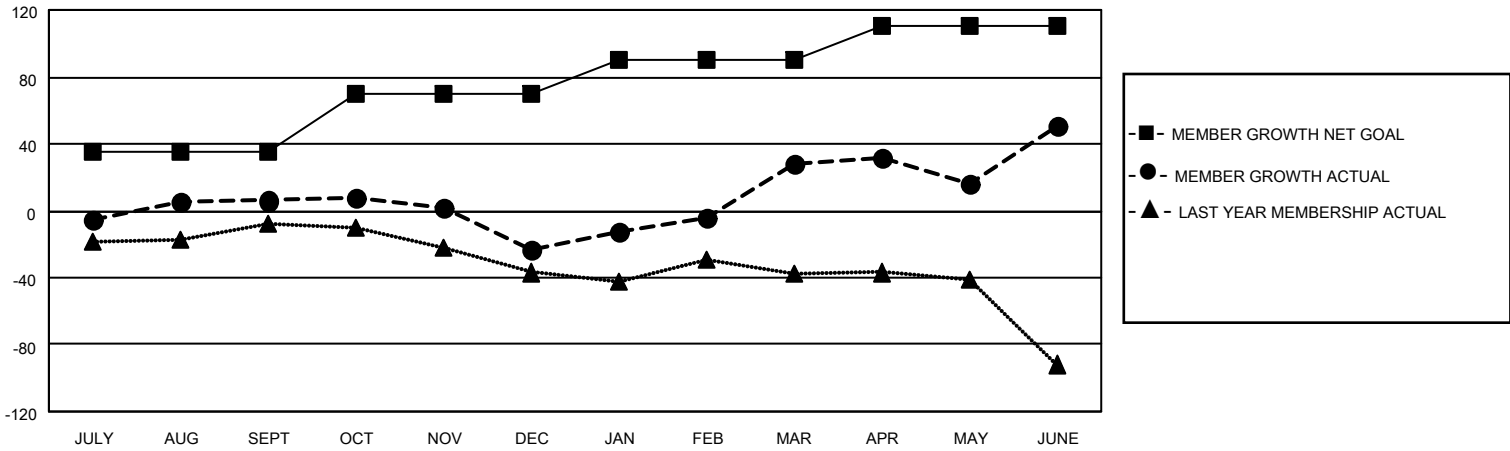
Clubs			
RESULTS FOR 2022-2023			
QUARTER	NEW CLUB GOAL	NEW CLUBS	DROPPED CLUBS
JULY/AUG/SEPT	0	0	0
OCT/NOV/DEC	0	0	0
JAN/FEB/MAR	1	0	0
APR/MAY/JUNE	1	6	0

Members			
RESULTS FOR 2022-2023			
QUARTER	MEMBER GROWTH NET GOAL	MEMBER GROWTH ACTUAL	DROPPED MEMBERS ACTUAL (including transfers)
JULY/AUG/SEPT	35	54	46
OCT/NOV/DEC	35	33	60
JAN/FEB/MAR	20	96	37
APR/MAY/JUNE	20	190	143

**GOALS AND ACTUAL NEW CLUBS CUMULATIVE**



**GOALS AND ACTUAL MEMBERS CUMULATIVE**



DROPPED CLUBS: 0	
<b>DROPPED MEMBERS</b>	
DECEASED	32
CLUB CANCELLED	0
OTHER	254
<b>TOTAL</b>	<b>286</b>

64 CLUBS OF 98 ADDED 1 OR MORE NEW MEMBERS

[CLICK HERE FOR CUMULATIVE MEMBERSHIP DATA](#)

<u>GENDER DISTRIBUTION</u>	
MALE	1,204 (72.05%)
FEMALE	466 (27.89%)
NON BINARY	1 (0.06%)
PREFER NOT TO ANSWER	0 (0.00%)
TOTAL FAMILY UNIT MEMBERS	
	189
FAMILY MEMBERS PAYING HALF DUES	
	96